

Parabolic Panel Vertical Polarization Half-power Beam Width

870–960

V

36°

KATHREIN
Antennen · Electronic

VPol ParPanel 870–960 36° 20dBi

Type No.	K 73 45 64 7
Input	7-16 female
Frequency range	870 – 960 MHz
VSWR	< 1.3
Gain	20 dBi
Impedance	50 Ω
Polarization	Vertical
Front-to-back ratio	> 30 dB
Half-power Beam Width	Horizontal: 36°/ Vertical: 8°
Intermodulation IM3 (2 x 43 dBm carrier)	< -150 dBc
Max. power	500 W (at 50 °C ambient temperature)
Weight	30 kg
Wind load	Frontal: 950 N (at 150 km/h) Lateral: 600 N (at 150 km/h) Rearside: 950 N (at 150 km/h)
Max. wind velocity	200 km/h
Packing size	2420 x 640 x 465 mm
Height/width/depth	2250 / 591 / 406 mm

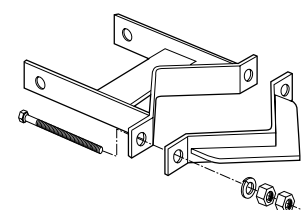
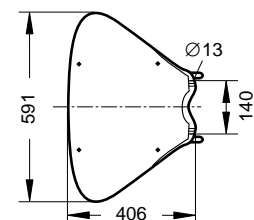
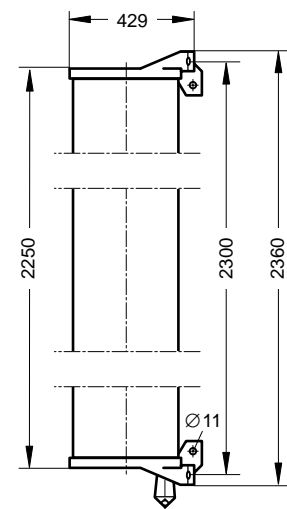
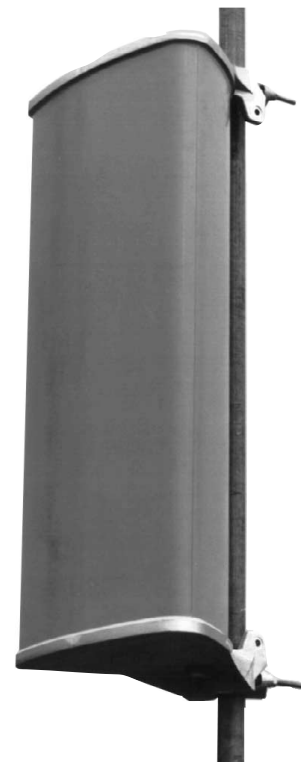
Material: Radiator: Weather-proof aluminum.
Reflector screen: Weather-proof aluminum.
Radome: Fiberglass, colour: Grey.
All screws and nuts: Stainless steel.

Ice protection: Due to the very sturdy antenna construction and the protection of the radiating system by the radome, the antenna remains operational even under icy conditions.

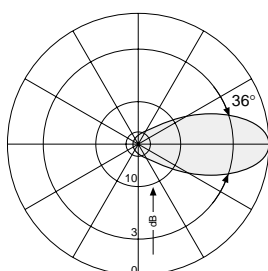
Grounding: All metal parts of the antenna are DC grounded.
The inner conductor is coupled capacitively.

Accessories (order separately)

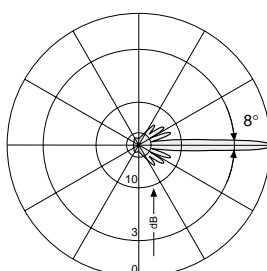
Type No.	Description	Remarks
733 736	2 clamps	Mast: 50 – 125 mm diameter
K 61 14 03	2 clamps	Mast: 115 – 210 mm diameter
K 61 14 04	2 clamps	Mast: 210 – 380 mm diameter
K 61 14 05	2 clamps	Mast: 380 – 521 mm diameter
733 695	1 downtilt kit	Downtilt angle: 0° – 10° Use the downtilt kit together with 2 clamps suitable for the mast diameter.



K 61 14 03



Horizontal Pattern



Vertical Pattern

936.636/d Subject to alteration.